

**Anti-p73 Antibody**  
**Rabbit polyclonal antibody to p73**  
**Catalog # AP61296****Specification**

---

**Anti-p73 Antibody - Product Information**

Application	WB, IHC
Primary Accession	<a href="#">O15350</a>
Other Accession	<a href="#">Q9JJP2</a>
Reactivity	Human, Mouse, Rat, Monkey, Chicken, Dog
Host	Rabbit
Clonality	Polyclonal
Calculated MW	69623

**Anti-p73 Antibody - Additional Information****Gene ID** 7161**Other Names**

P73; Tumor protein p73; p53-like transcription factor; p53-related protein

**Target/Specificity**

Recognizes endogenous levels of p73 protein.

**Dilution**

WB~~WB (1/500 - 1/1000), IH (1/50 - 1/200)

IHC~~1:100~500

**Format**

Liquid in 0.42% Potassium phosphate, 0.87% Sodium chloride, pH 7.3, 30% glycerol, and 0.09% (W/V) sodium azide.

**Storage**

Store at -20 °C. Stable for 12 months from date of receipt

**Anti-p73 Antibody - Protein Information****Name** TP73**Synonyms** P73**Function**

Participates in the apoptotic response to DNA damage. Isoforms containing the transactivation domain are pro-apoptotic, isoforms lacking the domain are anti-apoptotic and block the function of p53 and transactivating p73 isoforms. May be a tumor suppressor protein. Is an activator of FOXJ1 expression (By similarity). It is an essential factor for the positive regulation of lung ciliated cell differentiation (PubMed:<a href="http://www.uniprot.org/citations/34077761" target="\_blank">34077761</a>).

**Cellular Location**

Nucleus. Cytoplasm. Note=Accumulates in the nucleus in response to DNA damage

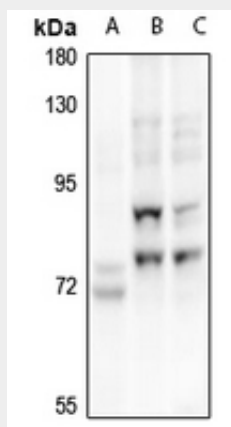
**Tissue Location**

Expressed in striatal neurons of patients with Huntington disease (at protein level). Brain, kidney, placenta, colon, heart, liver, spleen, skeletal muscle, prostate, thymus and pancreas Highly expressed in fetal tissue. Expressed in the respiratory epithelium (PubMed:34077761).

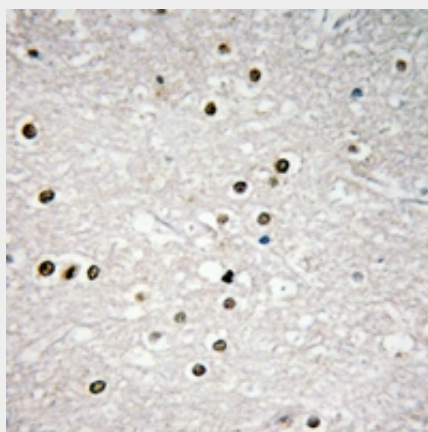
**Anti-p73 Antibody - Protocols**

Provided below are standard protocols that you may find useful for product applications.

- [Western Blot](#)
- [Blocking Peptides](#)
- [Dot Blot](#)
- [Immunohistochemistry](#)
- [Immunofluorescence](#)
- [Immunoprecipitation](#)
- [Flow Cytometry](#)
- [Cell Culture](#)

**Anti-p73 Antibody - Images**

Western blot analysis of p73 expression in rat kidney (A), HCT116 (B), HepG2 (C) whole cell lysates.



Immunohistochemical analysis of p73 staining in human brain formalin fixed paraffin embedded tissue section. The section was pre-treated using heat mediated antigen retrieval with sodium citrate buffer (pH 6.0). The section was then incubated with the antibody at room temperature and detected using an HRP conjugated compact polymer system. DAB was used as the chromogen. The section was then counterstained with haematoxylin and mounted with DPX.

**Anti-p73 Antibody - Background**

KLH-conjugated synthetic peptide encompassing a sequence within the center region of human p73. The exact sequence is proprietary.